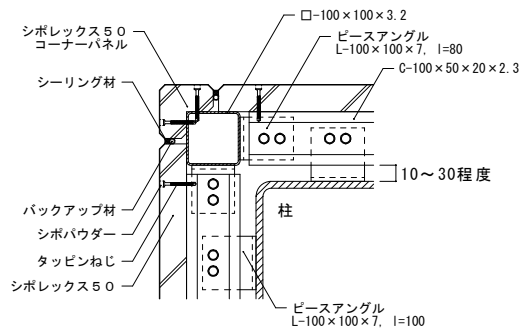
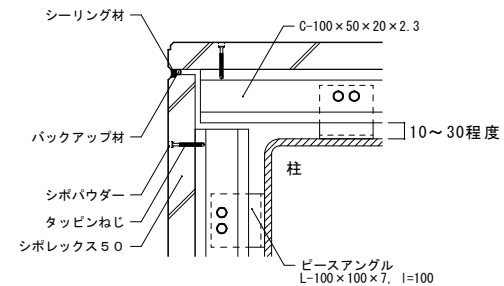


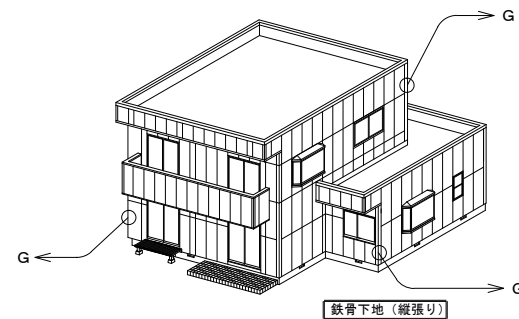
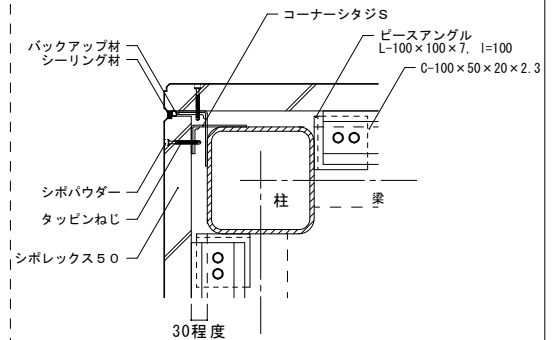
【外洞縁】

[illegible]

【外洞縁】



Technical drawing of a window frame cross-section. The drawing shows a central rectangular opening labeled "柱" (Post). To the left of the opening is a vertical assembly consisting of a "バックアップ材" (Backup material), "シボパウダー" (Shibopowder), "タッピンねじ" (Tapping screw), and "シボレックス50" (Shiborex 50). To the right of the opening is a horizontal assembly consisting of a "C-60 x 30 x 20 x 2.3, l=100" (Channel), a "C-100 x 50 x 20 x 2.3" (Channel), and a "ビスアングル L-100 x 100 x 7, l=100" (Screw angle). A "シーリング材" (Sealing material) is shown at the top left corner. A dimension line indicates a distance of "30" from the bottom left corner to the center of the post. A dashed line labeled "梁" (Beam) is shown to the right of the post.



特記

工事名称：

記号／更新日

図 番

殿

S50s-3
--------

設計管理：

2015. 4. 20
制 定 人

御注文主：

制 定 日
2002 10 02